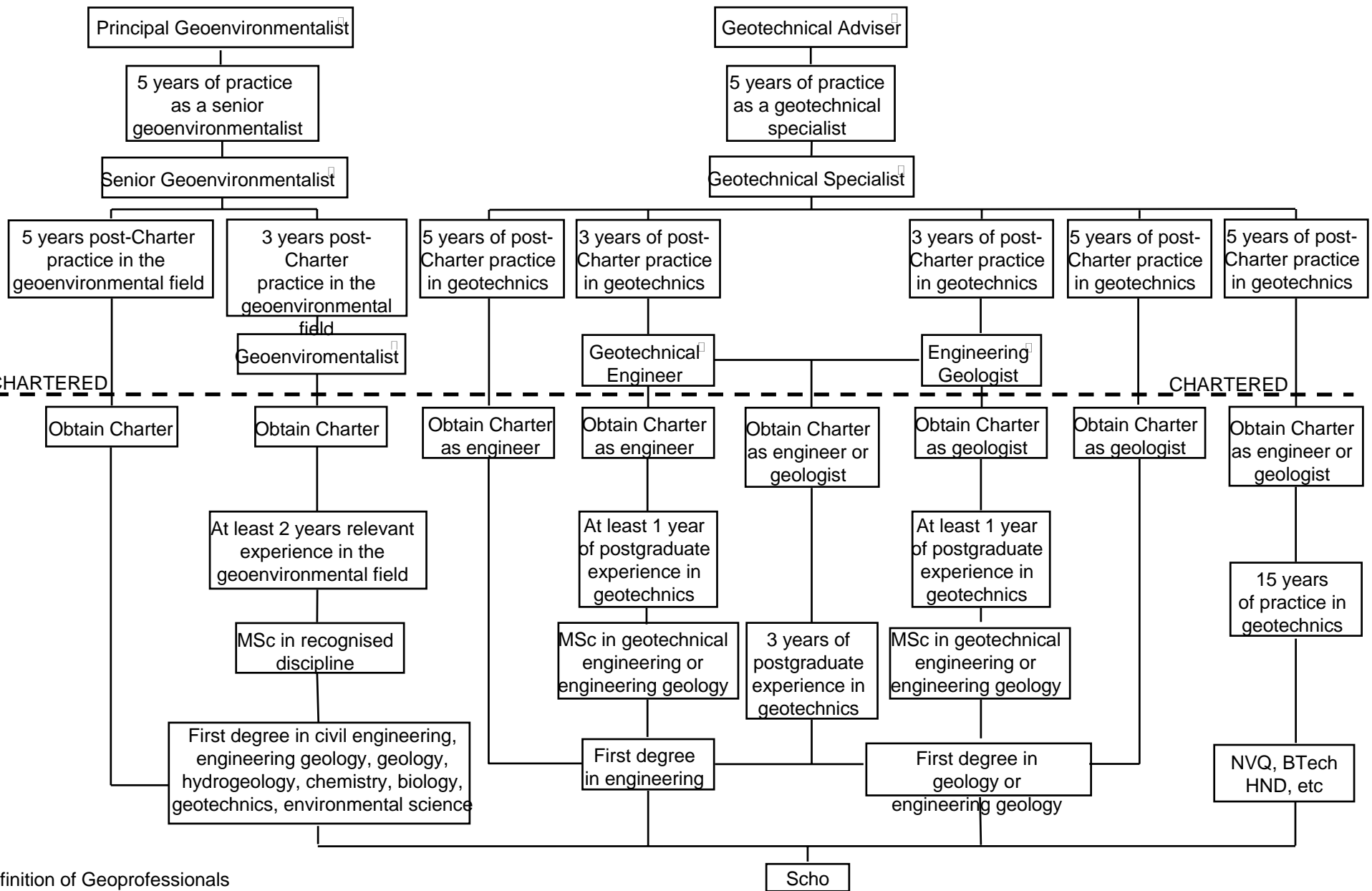


# TRAINING PATHS FOR GEOPROFESSIONALS

CONTINUING PROFESSIONAL DEVELOPMENT  
MIN.EQUIVALENT OF ICE REQUIREMENTS i.e.>5 DAYS/YEAR

CHARTERED

CHARTERED



## Definition of Geoprosessionals

□ AGS guide to the Model Document Report. 'Geoenvironmental Site Assessment' 1996.

□ "Site investigation in construction series" - Document 2. Planning, procurement and quality management. Recommendation from the Site Investigation Steering Group. Published by Thomas Telford, 1993.

Scho

ol