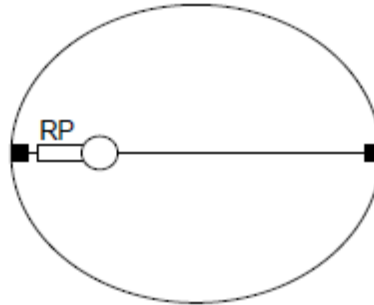


AGS Format Monitoring Data Example

16 - Tape extensometer



Project: Acme Gasworks
 Location of RP: 539277, 179635
 Level of RP: -20.35m
 Span: HD1

Date	Time	Dial Reading	Displacement	Comments
03/05/1999	11:45	124.5	0	Base reading
04/05/1999	12:00	124.5	0	
05/05/1999	11:45	123.5	-1	
06/05/1999	11:30	122.2	-2.3	
07/05/1999	11:00	120.1	-4.4	
08/05/1999	12:45	118	-6.5	
09/05/1999	11:45	116.8	-7.7	
10/05/1999	11:45	116.1	-8.4	
11/05/1999	12:00	115.6	-8.9	
12/05/1999	11:45	115.2	-9.3	
13/05/1999	11:30	115.1	-9.4	
14/05/1999	11:00	115.1	-9.4	
15/05/1999	12:45	115	-9.5	
16/05/1999	12:00	115	-9.5	
17/05/1999	11:45	115	-9.5	
18/05/1999	12:00	115	-9.5	
19/05/1999	11:45	114.9	-9.6	
20/05/1999	11:30	114.9	-9.6	
21/05/1999	11:00	114.9	-9.6	
22/05/1999	12:45	114.9	-9.6	
23/05/1999	12:00	114.9	-9.6	
24/05/1999	11:45	114.9	-9.6	

AGS Format File (Edition 4)

```
"GROUP","PROJ"  
"HEADING","PROJ_ID","PROJ_NAME","PROJ_LOC","PROJ_CLNT","PROJ_CONT","PROJ_ENG"  
"UNIT","","",""  
"TYPE","ID","X","X","X","X","X"  
"DATA","Prj-AG","Acme Gasworks","Greenwich, London","Acme Enterprises","Acme Monitoring Ltd","Acme Consulting"
```

```
"GROUP","ABBR"  
"HEADING","ABBR_HDNG","ABBR_CODE","ABBR_DESC"  
"UNIT","",""  
"TYPE","X","X","X"  
"DATA","LOCA_TYPE","INST","Instrument"  
"DATA","MONG_TYPE","ETT","Tape extensometer"  
"DATA","MOND_TYPE","DSPA","Displacement in direction A"
```

```
"GROUP","TRAN"  
"HEADING","TRAN_ISNO","TRAN_DATE","TRAN_PROD","TRAN_STAT","TRAN_DESC","TRAN_AGS","TRAN_RECV"  
"UNIT","","yyyy-mm-dd","",""  
"TYPE","X","DT","X","X","X","X","X"  
"DATA","1","2013-05-01","ACME Monitoring Ltd","Draft","Example tape extensometer monitoring point details and data","4.0","ACME Consulting"
```

```
"GROUP","TYPE"  
"HEADING","TYPE_TYPE","TYPE_DESC"  
"UNIT","",""  
"TYPE","X","X"  
"DATA","ID","Unique identifier"  
"DATA","X","Text"  
"DATA","DT","Date time in international format"  
"DATA","PA","Pick list text field, abbreviations/codes listed in ABBR group"  
"DATA","PU","Pick list text field, abbreviations/codes listed in UNIT group"  
"DATA","XN","Text/numeric field"  
"DATA","0DP","Value, 0 decimal places"  
"DATA","1DP","Value, 1 decimal places"  
"DATA","2DP","Value, 2 decimal places"
```

```
"GROUP","UNIT"  
"HEADING","UNIT_UNIT","UNIT_DESC"  
"UNIT","",""  
"TYPE","X","X"  
"DATA","yyyy-mm-dd","day month year"  
"DATA","yyyy-mm-ddThh:mm","day month year hours minutes"  
"DATA","m","metre"  
"DATA","mm","millimetre"  
"DATA","deg","Degrees"
```

```
"GROUP","LOCA"  
"HEADING","LOCA_ID","LOCA_TYPE","LOCA_NATE","LOCA_NATN","LOCA_GL","LOCA_FDEP"  
"UNIT","","m","m","m","m"  
"TYPE","ID","PA","0DP","0DP","2DP","0DP"  
"DATA","HD1","INST","539277","179635","-20.35",""
```

```
"GROUP","MONG"  
"HEADING","LOCA_ID","MONG_ID","MONG_DIS","MONG_DATE","MONG_TYPE","MONG_BRGA","MONG_INCA","MONG_RSCA","MONG_CON  
T"  
"UNIT","","m","yyyy-mm-dd","deg","deg",""  
"TYPE","ID","X","1DP","DT","PA","0DP","0DP","X","X"  
"DATA","HD1","HD1","4.8","1999-04-15","ETT","175","0","convergence -ve","ACME Monitoring Ltd"
```

```
"GROUP","MOND"  
"HEADING","LOCA_ID","MONG_ID","MONG_DIS","MOND_DTIM","MOND_TYPE","MOND_REF","MOND_RDNG","MOND_UNIT","MOND_CONT"  
,"MOND_REM"  
"UNIT","","m","yyyy-mm-ddThh:mm","",""  
"TYPE","ID","X","1DP","DT","PA","X","XN","PU","X","X"  
"DATA","HD1","HD1","4.8","1999-05-03T11:45","DSPA","1","0","mm","ACME Monitoring Ltd","Base reading"  
"DATA","HD1","HD1","4.8","1999-05-04T12:00","DSPA","2","0","mm","ACME Monitoring Ltd",""  
"DATA","HD1","HD1","4.8","1999-05-05T11:45","DSPA","3","-1","mm","ACME Monitoring Ltd",""  
"DATA","HD1","HD1","4.8","1999-05-06T11:30","DSPA","4","-2.3","mm","ACME Monitoring Ltd",""  
"DATA","HD1","HD1","4.8","1999-05-07T11:00","DSPA","5","-4.4","mm","ACME Monitoring Ltd",""
```



"DATA","HD1","HD1",4.8,"1999-05-08T12:45","DSPA",6,"-6.5","mm","ACME Monitoring Ltd",""
"DATA","HD1","HD1",4.8,"1999-05-09T11:45","DSPA",7,"-7.7","mm","ACME Monitoring Ltd",""
"DATA","HD1","HD1",4.8,"1999-05-10T11:45","DSPA",8,"-8.4","mm","ACME Monitoring Ltd",""
"DATA","HD1","HD1",4.8,"1999-05-11T12:00","DSPA",9,"-8.9","mm","ACME Monitoring Ltd",""
"DATA","HD1","HD1",4.8,"1999-05-12T11:45","DSPA",10,"-9.3","mm","ACME Monitoring Ltd",""
"DATA","HD1","HD1",4.8,"1999-05-13T11:30","DSPA",11,"-9.4","mm","ACME Monitoring Ltd",""
"DATA","HD1","HD1",4.8,"1999-05-14T11:00","DSPA",12,"-9.4","mm","ACME Monitoring Ltd",""
"DATA","HD1","HD1",4.8,"1999-05-15T12:45","DSPA",13,"-9.5","mm","ACME Monitoring Ltd",""
"DATA","HD1","HD1",4.8,"1999-05-16T12:00","DSPA",14,"-9.5","mm","ACME Monitoring Ltd",""
"DATA","HD1","HD1",4.8,"1999-05-17T11:45","DSPA",15,"-9.5","mm","ACME Monitoring Ltd",""
"DATA","HD1","HD1",4.8,"1999-05-18T12:00","DSPA",16,"-9.5","mm","ACME Monitoring Ltd",""
"DATA","HD1","HD1",4.8,"1999-05-19T11:45","DSPA",17,"-9.6","mm","ACME Monitoring Ltd",""
"DATA","HD1","HD1",4.8,"1999-05-20T11:30","DSPA",18,"-9.6","mm","ACME Monitoring Ltd",""
"DATA","HD1","HD1",4.8,"1999-05-21T11:00","DSPA",19,"-9.6","mm","ACME Monitoring Ltd",""
"DATA","HD1","HD1",4.8,"1999-05-22T12:45","DSPA",20,"-9.6","mm","ACME Monitoring Ltd",""
"DATA","HD1","HD1",4.8,"1999-05-23T12:00","DSPA",21,"-9.6","mm","ACME Monitoring Ltd",""
"DATA","HD1","HD1",4.8,"1999-05-24T11:45","DSPA",22,"-9.6","mm","ACME Monitoring Ltd",""